

# WEST COAST GOVERNORS ALLIANCE on OCEAN HEALTH

CALIFORNIA OREGON WASHINGTON

## Work Plan UPDATE

NOAA NMFS Northwest Fisheries Science Center,  
Seattle WA

M. Alan Lovewell – West Coast Sea Grant Fellow  
[mark.lovewell@noaa.gov](mailto:mark.lovewell@noaa.gov)

  
**Sea Grant**

Washington

Oregon

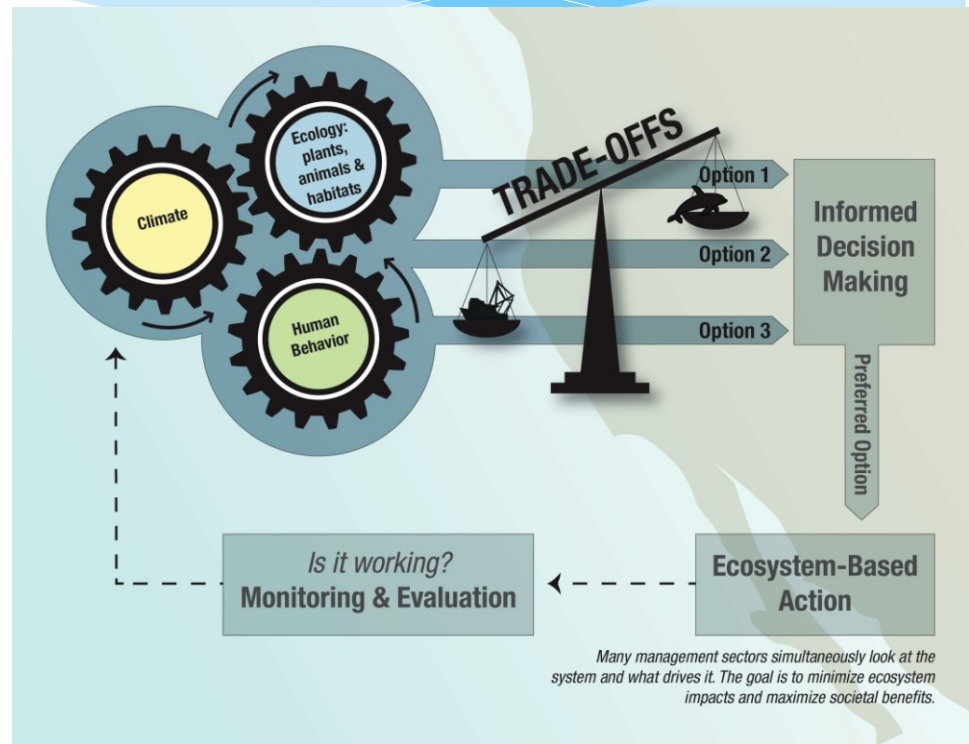
California

University of  
Southern California



# Themes

- \* Improve the **integration** of ecosystem science into resource management
- \* Develop science **communication** materials to educate stakeholders
- \* Improve **collaboration** and **coordination** between regional partners



# Accomplishments

- \* Contribute and maintain [WestCoastOceans.wordpress.com](http://WestCoastOceans.wordpress.com)
- \* 2 short films on current ecological studies in the region
  - \* Puget Sound food web interaction study
  - \* Recolonization of Salmon in the Elwha River
- \* IEA and marine planning (MP) two page document
- \* Draft scoping chapter for NOAA California Current Integrated Ecosystem Assessment (CCIEA)

# WCGA Fellows Blog

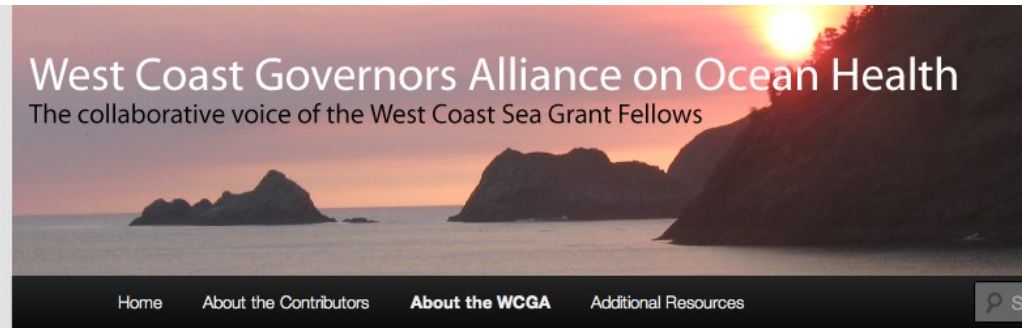
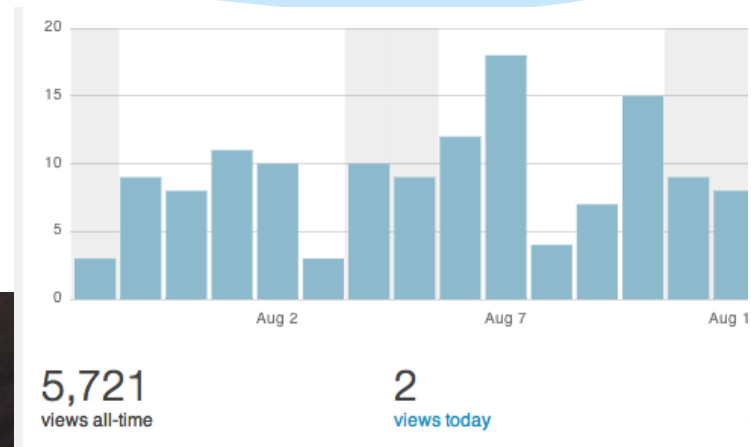
WestCoastOceans.wordpress.com

First post – **July 7, 2011**

Number of posts – **20**

All time views – **5,721**

Views on busiest day - **126**



Edit

## About the WCGA



On September 18, 2006 the Governors of California, Oregon and Washington announced

### Views by Country

Today Yesterday

Summaries →

Country	Views
United States	8
Peru	3
Colombia	1



1 8

# Short Films

My Feed **My Videos** Watch Later Discover Activity



MAY

17



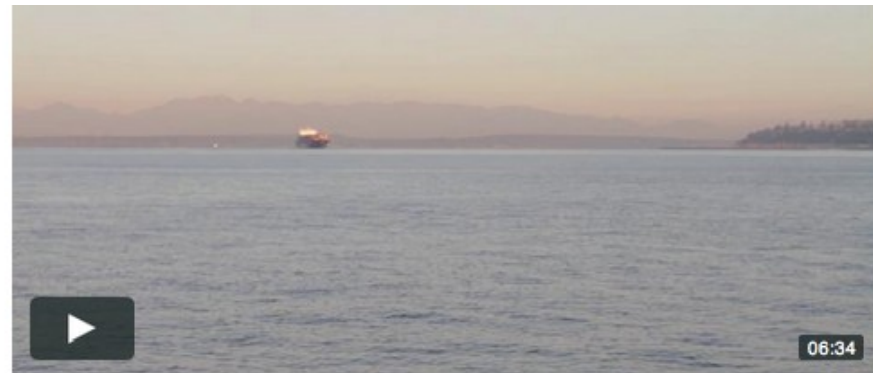
05:08



## Beyond River Mile Five

by Alan Lovewell 3 months ago

For nearly 100 years wild salmon populations along the Elwha River, located at the heart of Olympic National Park, have been limited to a five-mile stretch of the 45 mile-long river below the Elwha and Glines Canyon dams. In September 2011 engineers began the Nation's second largest ecological restoration...



06:34

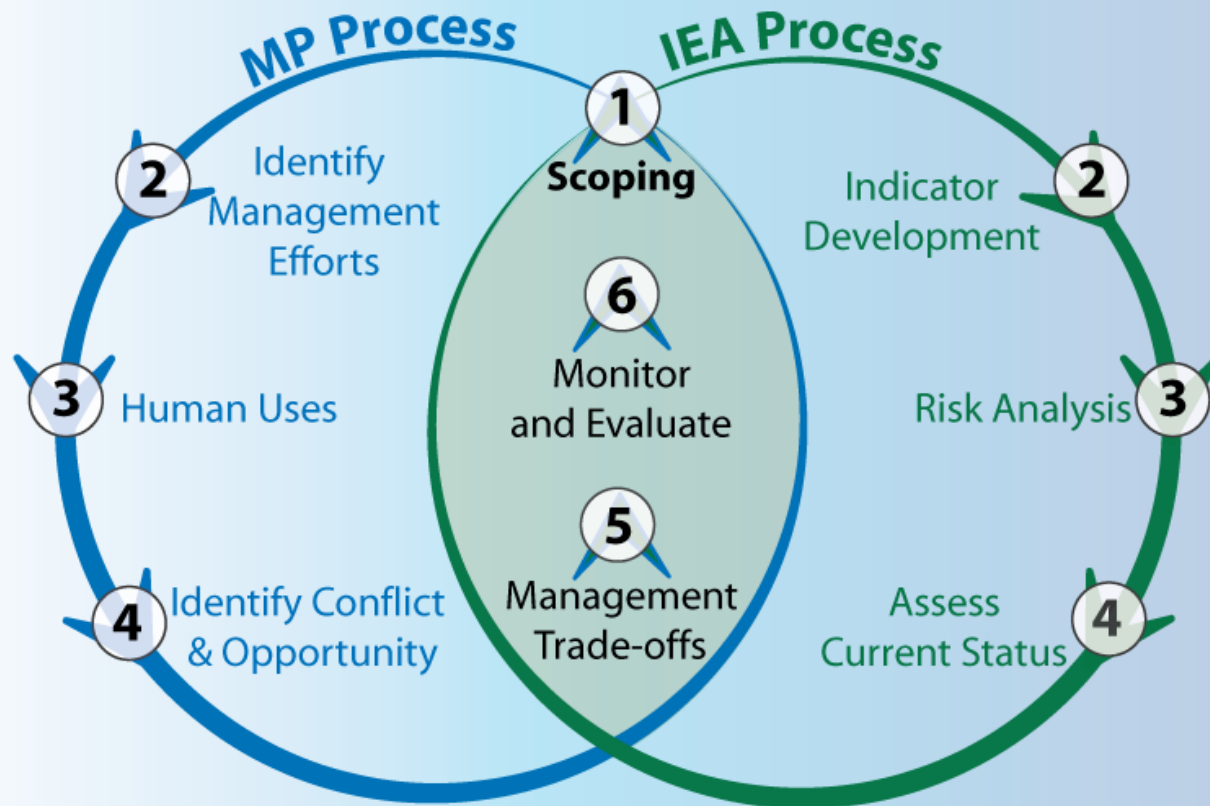


## Measuring the Pulse of Puget Sound

by Alan Lovewell 9 months ago

When you look out at Puget Sound do you wonder how it works and if it's

# Marine Planning and IEAs

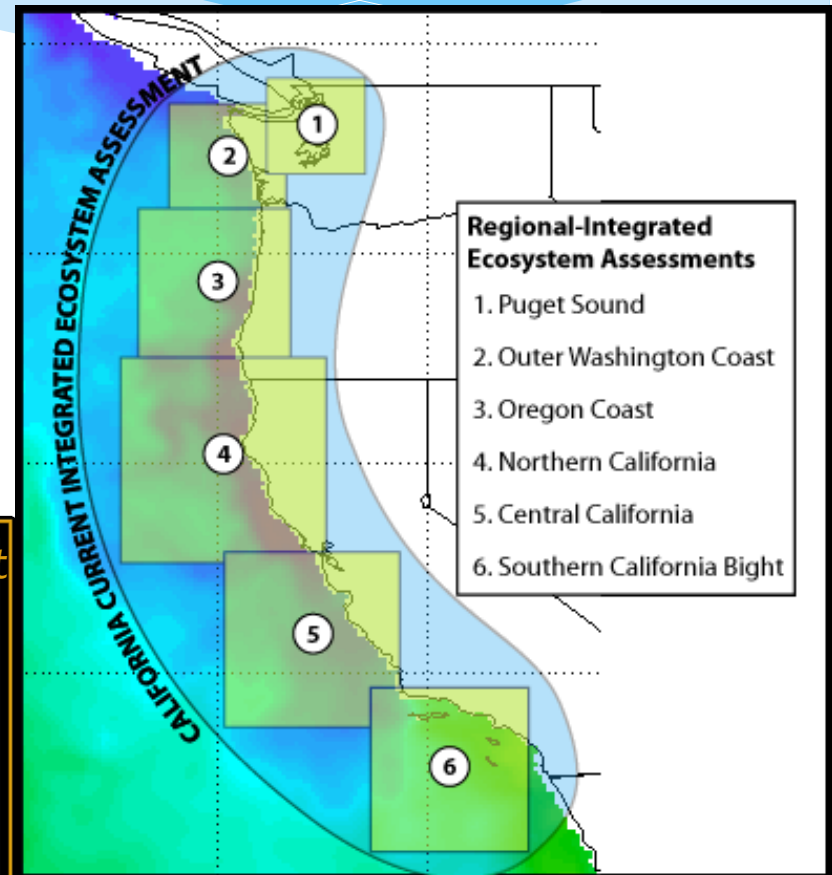




# Scoping Plan for NOAA CCIEA and R-IEAs – Partnership

Draft scoping plan under review

- \* Identify stakeholders
- \* Develop collaboration and coordination strategies
- \* Identify needs of IEA scientists
- \* Identify key partners:



WEST COAST GOVERNORS  
ALLIANCE on OCEAN HEALTH  
CALIFORNIA OREGON WASHINGTON

*Regional policy & management  
coordination/collaboration*



*Science and Federal support*



*Community-scale, grassroots,  
garner support, build capacity*

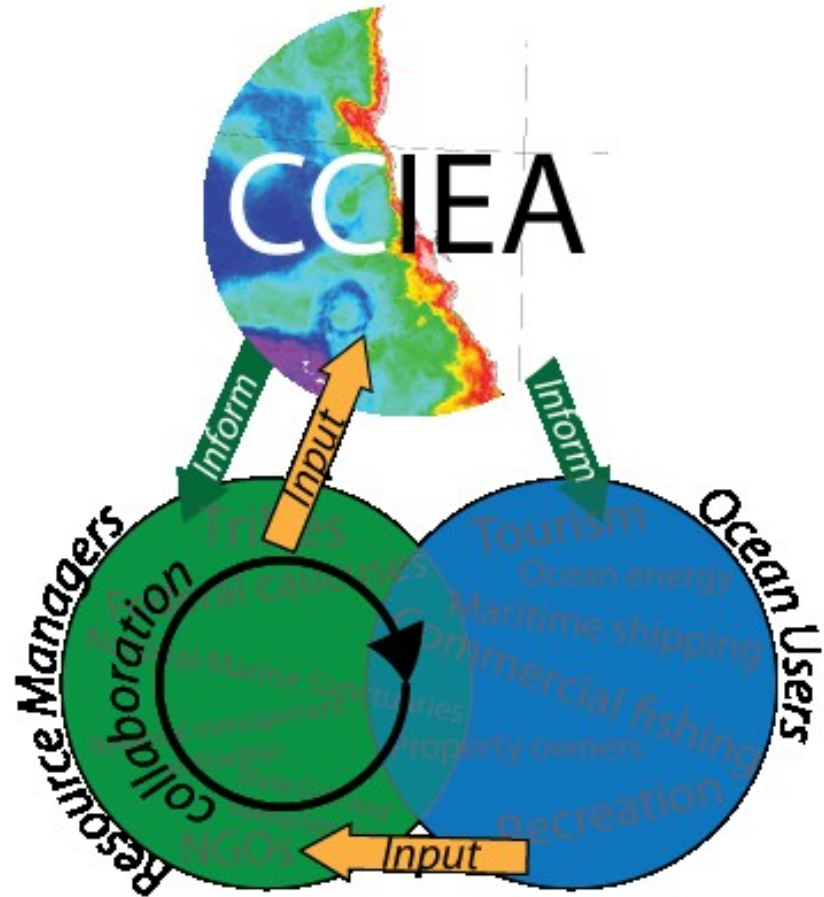
# Scoping Plan for NOAA CCIEA and RIEAs – Communication

## Develop **education/inform**

- \* Webinars
- \* Example documents
- \* Videos
- \* Website

## Develop **input** tool

- \* Questionnaire
- \* Interviews
- \* Workshops





# What's Next?

## Current Projects

- \* Implement CCIEA webinars – **Fall 2012**
- \* Finalize IEA example documents – **Really soon!**
- \* Develop/distribute IEA scoping questionnaire – **Summer 2013**
- \* Conceptualize IEA and policy intersection – **On going**

## Questions

- \* What are the relationships between IEAs – MP – RPBs?
- \* What is current baseline understanding of IEAs?
- \* How do resource managers collectively contribute and benefit from information provided by IEAs?
- \* How do we measure success?